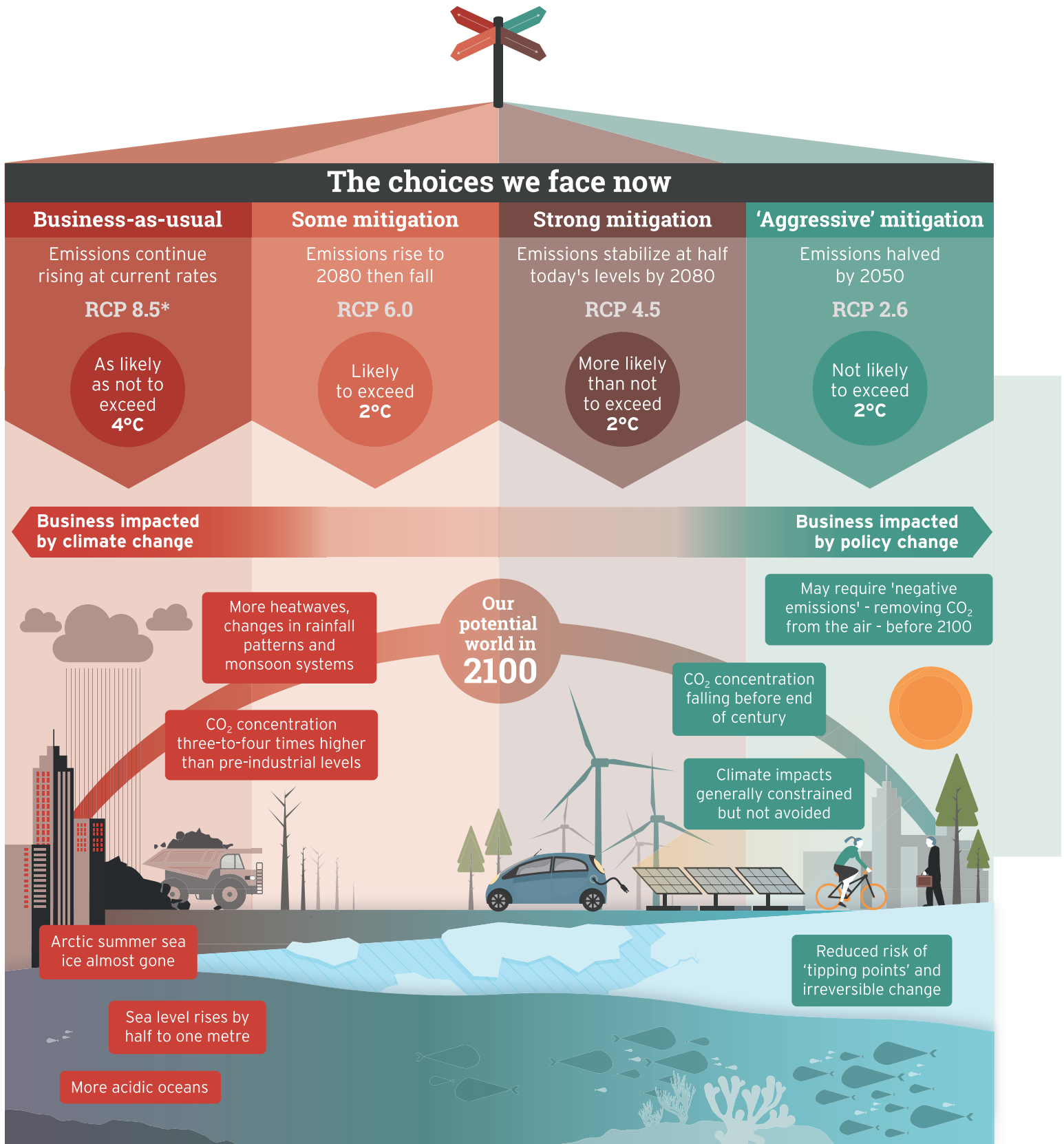


Carbon crossroads

The Intergovernmental Panel on Climate Change (IPCC) explores four potential futures depending what policies governments adopt to cut emissions



*The four RCP (Representative Concentration Pathway) scenarios each project a certain amount of carbon to be emitted by 2100, and as a result lead to a different amount of human-driven climate change. Climate change will continue after 2100 and elevated temperatures will remain for many centuries after human CO₂ emissions cease.